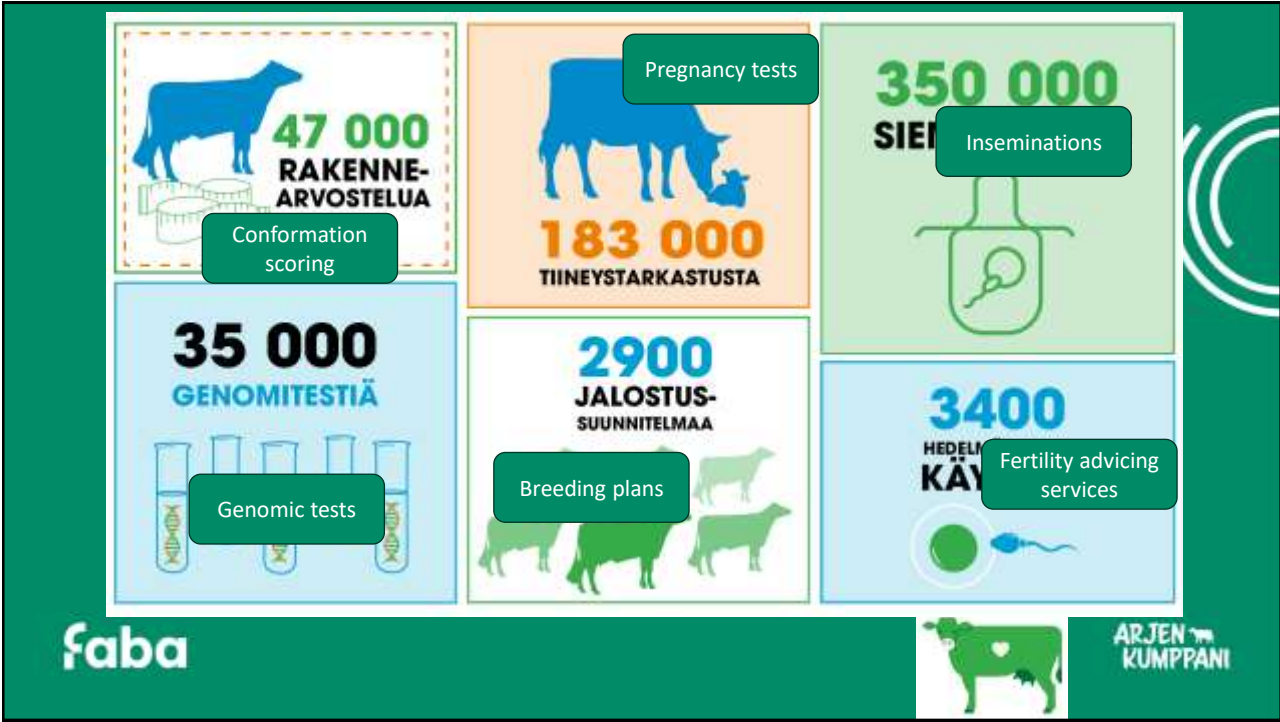


# Bovine genomic testing in Finland

Pirkko Taurén, pirkko.tauren@faba.fi  
2.8.2023



1



2

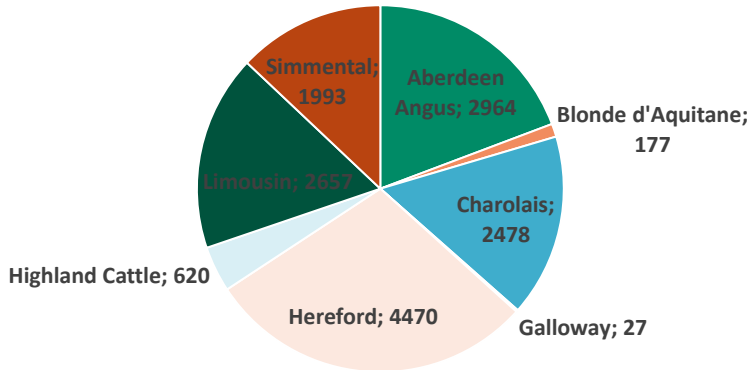
## Suckler cow herds in Finland 2023

	Total	1-19	20-49	50-74	75-99	100-149	150-
Suckler cows	64 607	7 444	24 232	14 233	8 779	6 339	3 580
Herds	2 034	870	752	238	103	54	17



3

## Beef recording in Finland 2023



4

## Why to use genomic testing?

- Increase the genetic level of the herd
  - To select right animals for next generation
    - Which females or bulls to use
    - Which dairy cows to inseminate by beef breed
    - When you sell or buy – which to select?
- Ensure the pedigree of the animals
- Avoid genetic defects



**faba**

**ARJEN KUMPPANI**

5

## Bovine genomics testing in Finland

### DAIRY – started 2009

- Breeds: Holstein, Ayrshire, Jersey, (coming Finncattle (western type))
- NAV - Nordic Cattle Genetic Evaluation (FIN, SWE, DNK)
- Over 40 traits evaluated
  - Production
  - Health
  - Conformation
  - Functional traits
  - Saved Feeds
- NAV also offers genomic evaluation services for foreign animals.

### BEEF - started in Finland in **March 2023**

- Breeds: Angus, Charolais, Hereford, Limousine, Simmental
- 9 traits
  - Weights (birth, 200d, 365d)
  - Maternal trait
  - Calving
  - Slaughter traits
- We are going towards Nordic genomic evaluation



**faba**

**ARJEN KUMPPANI**

6

## Monogenetic traits included Finnish beef genomic test

- **All breeds:** RP1 / Pollness
- **Angus:** DD
- **Charolais:** Ataxia
- **Hereford:** Hypotricosi / MD / MSUD
- **Simmental:** BH2
- **Limousin:** Protoporfyria
- **Simmental:** Trombopatia

**faba**

**ARJEN  
KUMPPANI**

7

## No of genomic tests (20.6.2023)

Rotu	Saapunut, kpl
AAN	4614
CHA	3750
HER	4466
LIM	2317
SIM	2876
<b>Total</b>	<b>18023</b>

**faba**

**ARJEN  
KUMPPANI**

8

# Thank you!

Questions!

Faba

Pirkko Taurén

[pirkko.tauren@faba.fi](mailto:pirkko.tauren@faba.fi)

tel. +358 400 614 074

[www.faba.fi](http://www.faba.fi)

**faba**

**ARJEN**   
**KUMPPANI**

